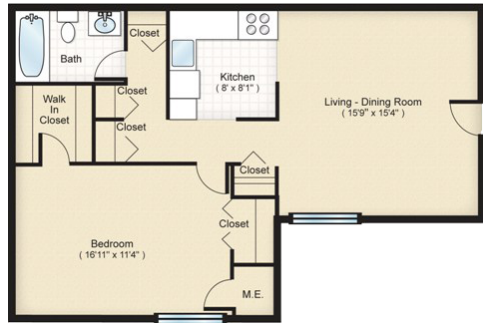


# Welcome Home

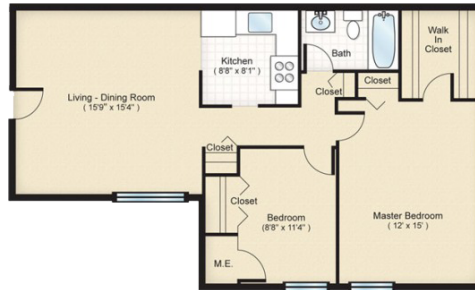


## One Bedroom

- ▶ 760 sq.ft.
- ▶ Standard & Premium finishes
- ▶ Washer/Dryer\*
- ▶ \$110/mo. for all Utilities
- ▶ \$1145 - \$1270

## Two Bedroom

- ▶ 940 s.ft.
- ▶ One full bath
- ▶ Standard & Premium finishes
- ▶ Washer/Dryer\*
- ▶ \$145/mo. for all Utilities
- ▶ \$1225 - \$1375



## Three Bedroom

- ▶ 1072 sq.ft.
- ▶ One & a half or Two full baths
- ▶ Standard & Premium finishes
- ▶ Washer/Dryer\*
- ▶ \$195/mo. for all Utilities
- ▶ \$1380 - \$1725



We offer Rent Discounts to

- ▶ Active Duty Military
- ▶ Government Employees

### Application and Move In Fees

- \$45 Application fee per occupant over 18 .
  - \$300 Security Deposit with approved credit
  - \$99 Administrative fee
- Cats and Dogs under 35 lbs. are welcome. Some breed restrictions apply.
- \$300 Pet Fee per pet
  - \$35/mo Pet Rent per pet



Potomac Ridge

2810 Woodmark Drive, #202, Woodbridge, VA 22191

# Potomac Ridge

To apply go to  
[PotomacRidgeApts.com](http://PotomacRidgeApts.com)  
 703.221.7656 info@potomacridgeapts.com



## Features and Amenities

- |   |   |
|---|---|
| <ul style="list-style-type: none"> <li>■ Ample open parking</li> <li>■ Controlled access buildings</li> <li>■ Professionally managed</li> <li>■ 24-hour emergency maintenance</li> <li>■ Picnic pavilion w/ BBQ grills</li> <li>■ Playground</li> </ul> | <ul style="list-style-type: none"> <li>■ Premium &amp; Standard finishes*</li> <li>■ Dishwasher &amp; microwave</li> <li>■ Gas cooking</li> <li>■ Ceramic tile baths</li> <li>■ Large closets</li> <li>■ In-unit washer &amp; dryer*</li> </ul> |
|---|---|

\*select apartments

